

# Peerless® Combi 160™

## Condensing, Stainless Steel Gas Boiler



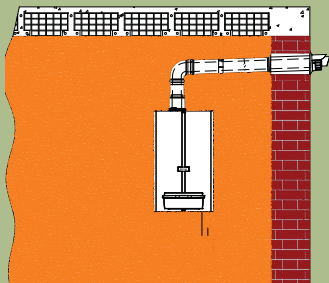
### Standard Features

- 91.1% AFUE—ENERGY STAR® Efficient!
- Gas-fired Condensing Boiler for Natural or LP Gas
- ASME Stainless Steel Heat Exchanger
- Coil-type Hot Water Tank for Domestic Hot Water
- Concentric Vent Kit with 3' Termination, 3' Adjustable, 90-degree Elbow and Vent Connector
- Pre-mixed Gas Burner Technology
- 30,000 to 160,000 Btu/hr Input
- Environmentally Friendly—LoNOx Operation
- Continuous 5 to 1 Modulation

### Peerless® Combi 160™

The Peerless® Combi (PC) 160™ gas-fired boiler from Peerless® Boilers is a 91.1% efficient condensing boiler that uses premixed burner technology for optimal combustion. The boiler offers hydronic heat and domestic hot water in one complete unit by using an integrated coil-type hot water tank! Stainless steel tubes and an ASME rated heat exchanger are also features of the boiler. The patented premix air/gas modulation system, domestic hot water heat exchanger, and electronic controls make the PC160™ condensing boiler a top-notch choice for performance and dependability, safety, low emissions, and “green” operation.

The PC160™ includes panel mounted controls, installed and wired circulator and expansion tank that are built into an attractive, sound attenuated enclosure. All utility connections for gas, water and condensate are conveniently located at the bottom of the unit. The wall mounted boiler design allows for ease of installation, maintenance and service.



### Venting

Venting is provided by a standard concentric vent kit\* that allows the boiler to be vented either “through-the-wall” or vertically for maximum installation flexibility. The concentric vent kit utilizes outside air for combustion thereby reducing air infiltration, thus lowering fuel bills. Optional components to increase venting lengths are also available.

**Optional approved venting materials are: ULC – System 636 Listed CPVC Venting and AL294C. See your local dealer for approved optional venting equipment.**

\*Please note: PC160™ venting components are not interchangeable with PUREFIRE® and Pinnacle® Oil venting components.

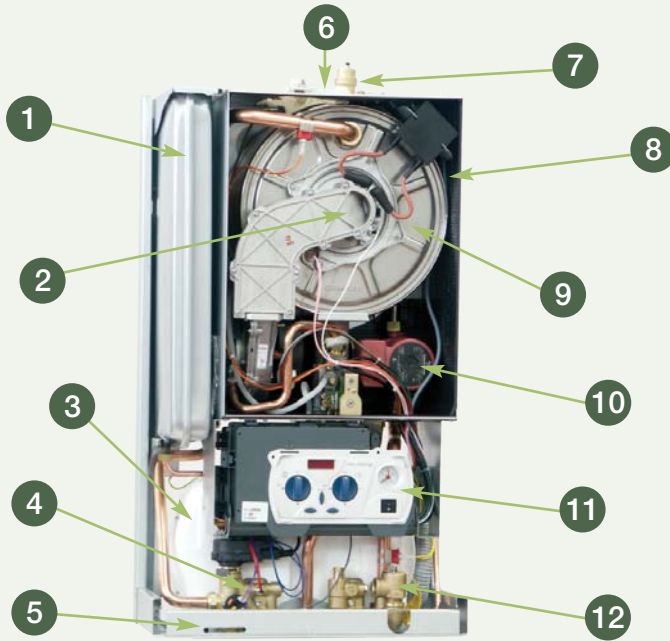
### Domestic Hot Water

Enjoy ample low-cost domestic hot water without the expense of a separate water heater. The built-in tankless heater is capable of producing up to 4 gallons of domestic hot water per minute. The tankless heater can be removed from the boiler unit for hassle-free cleaning.

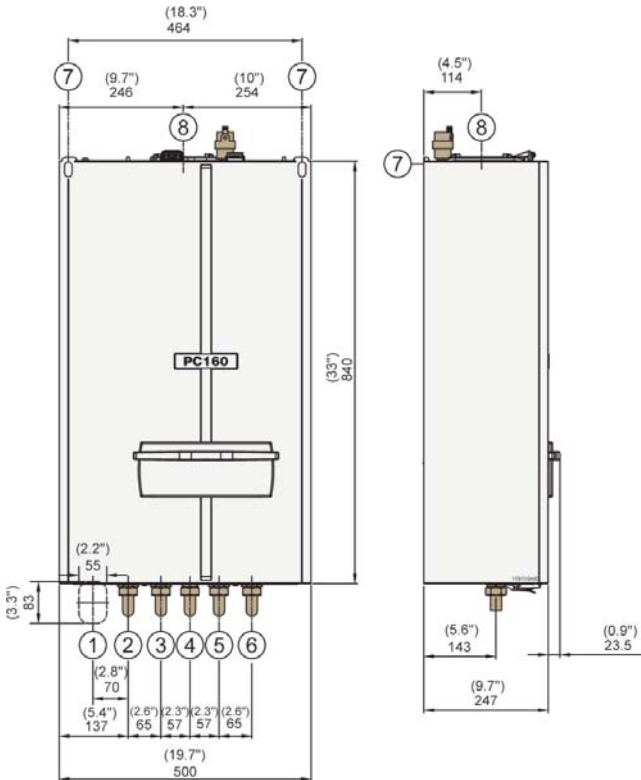




# Technical Information



- 1 Expansion Tank
- 2 Premix LoNOx Burner with 5 to 1 Turndown
- 3 Coil Type Hot Water Tank
- 4 3-Way Valve
- 5 All Water, Electrical and Gas Piping Connects are Concentrated at Bottom of Boiler
- 6 Top Flue Connection
- 7 Automatic Air Vent
- 8 Low Noise Cabinet
- 9 ASME Heat Exchanger
- 10 Integral System Circulator
- 11 Control for Maximum Efficiency and Comfort
- 12 Relief Valve



## PC160™ Ratings and Engineering Data

### Technical Data

Nominal Heat Input	160,000 Btu/hr
Minimum Heat Input	30,000 Btu/hr
AFUE Efficiency	91.1%
*DOE Heating Capacity (Based on Standard Test Specified by The United States Department of Energy)	142,000 Btu/hr
Net Ratings	123,000 Btu/hr
Maximum Heating Temperature	189°F
Maximum Heating Pressure	30 psi
Maximum Pressure of Domestic Hot Water Circuit	125 psi
Capacity of Expansion Tank	2.64 gal
Nominal Power Supply Voltage	120/60 V/Hz
Electric Power	170 W
Flue Gas Pipes Diameter (Split) (Polypropylene)	3"
Flue Gas Pipes Max. Length (Split) (Polypropylene)	300 ft Equivalent
Flue Gas Pipes Diameter (Concentric) (Polypropylene)	2.36" / 3.94"
Flue Gas Pipes Max, Length (Concentric) (Polypropylene)	70 ft Equivalent
CO Contents (0% O <sub>2</sub> with Natural Gas)	15 p.p.m.
NOx Contents (0% O <sub>2</sub> with Natural Gas)	15 p.p.m
Dimensions L x D x H (Approximate)	20" x 10" x 30"
Connections (Supply – Return – D.H.W. – D.C.W. – Gas)	3/4"
Weight	100 lbs

No.	Description	Connections		No.	Description	Connections	
		PC160				PC160	
1	Area for Power Supply Cable	—		5	DCW Connection	3/4" SWEAT	
2	Heating Supply Connection	3/4" SWEAT		6	Heating Return	3/4" SWEAT	
3	DHW Connection	3/4" SWEAT		7	Position for Boiler Support	—	
4	Gas Connection	3/4" NPT		8	Flue Discharge/Air Intake Connection	3"	



PeerlessBoilers.com



Printed on Recycled Paper

PeerlessBoilers.com

CUT-PC160 R2 (10/13-2M)  
Printed in U.S.A.  
©2013 PB Heat, LLC. All rights reserved.